

DRUM SET

HAPPY

PHARRELL WILLIAMS
ARR NICK LA RIVIERE

SLOWLY, RUBATO



Drum set staff 1: Cymbal icon and double bar line.

+ ♩=160

(A)

Drum set staff 2: Snare and bass drum notation with accents and a circled 'A' section.

Drum set staff 3: Snare and bass drum notation with slash marks.

Drum set staff 4: Snare and bass drum notation with slash marks and a circled 'B' section.

Drum set staff 5: Snare and bass drum notation with slash marks.

Drum set staff 6: Snare and bass drum notation with slash marks and a circled 'C' section.

Drum set staff 7: Snare and bass drum notation with slash marks.

Drum set staff 8: Snare and bass drum notation with slash marks and a circled 'D' section.

Drum set staff 9: Snare and bass drum notation with slash marks.

Drum set staff 10: Snare and bass drum notation with slash marks.

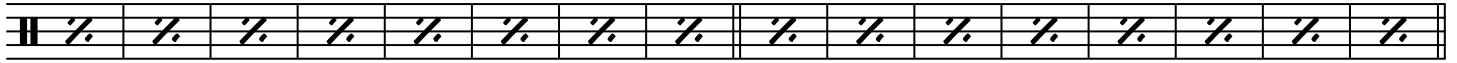
Drum set staff 11: Snare and bass drum notation with slash marks.

60 (E) CONGAS (OR LOW AND HIGH TOM)

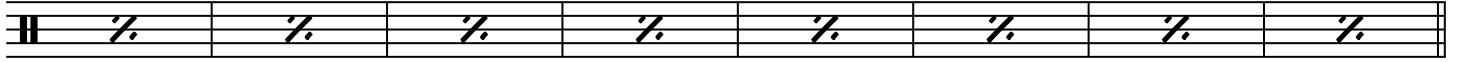
Congas staff 1: Conga notation with 'LOW' and 'HIGH' labels.

Congas staff 2: Conga notation with slash marks and a '(TO KIT)' label.

Congas staff 3: Conga notation with slash marks and a circled 'E' section.

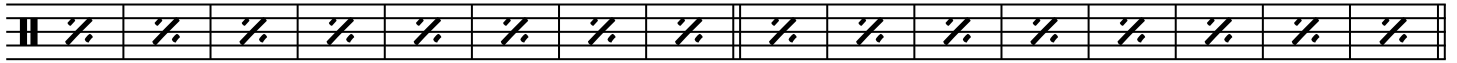
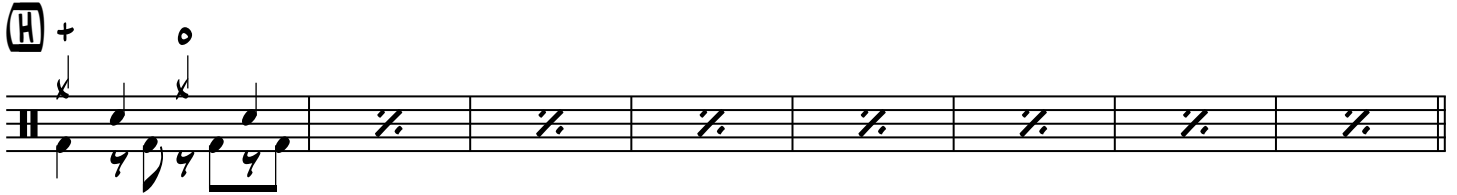
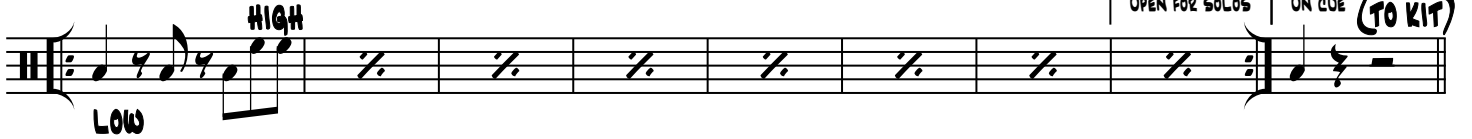


92

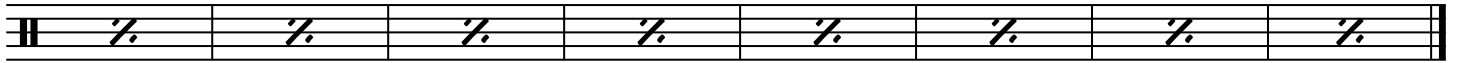


108

(G) OPEN FOR SOLOS, CONGAS (OR TOMS)



136



149

Trombone Lessons Available
Nick La Riviere
Nick@NickLaRiviere.com - 250-704-9972
www.NickLaRiviere.com